

The background of the image is a low-angle shot of an office ceiling with large, lime-green acoustic panels separated by dark, metallic-looking structural beams. The perspective creates a sense of height and modern architecture. A dark, semi-transparent diagonal band runs across the lower half of the image, serving as a backdrop for the company logo and tagline.

 **HUFCOR[®]**

the world leaders in **Operable Walls**

At the bottom of the image, there are several stylized, white, parallel lines that resemble architectural details or sound waves, arranged in a series of overlapping, angled blocks.

The Heights of Hufcor

In 2008, Hufcor Australia completed the manufacture and installation of 16.5 metre high Operable Walls at the Melbourne Convention Centre, Australia's first Six Star Green Star ® certified Convention Centre. On top of the fact that these walls were the world's second highest Operable Walls in one of the world's greenest buildings, the dual wall installation achieved an incredible site acoustic rating of 60Dw.

Hufcor has also built and installed some of Australia's highest Operable Walls including the Gold Coast Convention Centre (14.02m) and the RAS Showgrounds (12.6m).

While not every facility has the need for 18 metre high Operable Wall panels, Hufcor has the capability of not only manufacturing them, but designing them for ease of movement and fast setup.

In 2011, Hufcor introduced sound conditioning technology to complement the Operable Wall systems and provide a comprehensive set of corrective tools to optimize occupant comfort, productivity, privacy and flexibility in new and existing buildings.

A new innovation that truly does provide new dimensions in space and sound.

Is it any wonder Hufcor is seen as the foremost manufacturer and supplier when it comes to the world's finest in Operable Wall technology?

Visit us at www.hufcor.com.au for more information and ideas.



Main Auditorium Melbourne Exhibition & Convention Centre

Hufcor the world leaders in Operable Walls

Hufcor – providing the world with almost limitless Operable Wall solutions for any application with a commitment to innovation and continual improvement. We deliver creative design solutions to customer briefs, outstanding workmanship and sound management systems to optimize space flexibility, privacy, sound comfort and productivity.

Hufcor's extensive product range ensures a practical way to divide space, combining excellent acoustic properties to suit your individual project requirements. Our designs can match existing colour schemes and corporate style guides, and combined with this, still being manufactured to a budget. Rest easy, you've come to the right place.

Our Range:

Hufcor offers a range of Operable Walls that provide total ease of operation for any application.

5000 Series is designed to accommodate most general applications. A wide range of add-on options and accessories are also available to meet customized needs, for example overlay panels are an ideal choice to enhance the aesthetics of panel joins. Panels can also be fully glazed to interconnect with all standard 5000 Series panels providing viewing pleasure through your wall as you wish.



Manpower Recruitment Centre NSW



Child Support Agency ACT

8000 Series Operable Walls are our highest acoustically rated system. The 100mm thickness provides the maximum sound rating reduction R_w of between 45 and 53. Naturally, there are a range of product features, options and accessories available.

8000 Series acoustic Operable Walls are available in a range of perimeter frame suites: Standard, Finestile and Overlay.

We welcome your enquiry at any stage of the design process. We can help you achieve elegant, workable cost efficient solutions of simple or complex applications.

For more information visit our website: www.hufcor.com.au

5000 Series: Product Gallery



Myer Head Office Docklands VIC



PMI CBD Sydney NSW



Crown Silks Melbourne VIC



NAB Corporate Office Melbourne VIC



St. Katherines Restaurant Kew VIC



Australian Technical College Sunshine VIC

5000 Series: Overview

Features and benefits of the 5000 Series operable partitions

Feature: Top supported.

Benefit: No floor tracks or guides are required.

Feature: Interlocking vertical stiles.

Benefit: Creates positive interlocking between panels providing stability, ease of panel alignment, and ensures optimum acoustic separation.

Feature: Retractable Horizontal Pressure Seals.

Benefit: No dragging on floors or ceilings during movement (friction free travel). Optimum sound control and panel stability when extended.

Feature: 75mm thick aluminium frame.

Benefit: Provides space saving storage.

Feature: Viewing ports or windows.

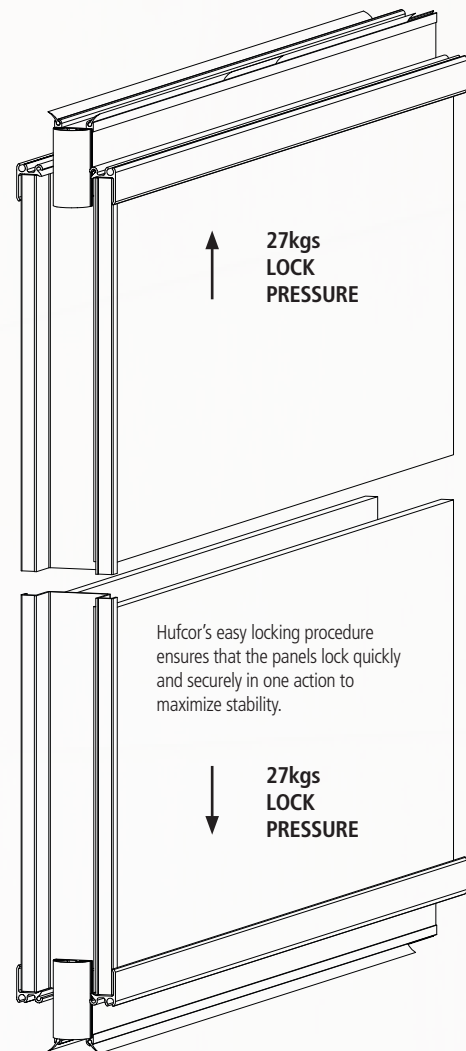
Benefit: Provides visual interconnectivity.

Feature: Full perimeter aluminium frame with steel RHS beams 4 times bolted.

Benefit: Provides a strong durable panel.

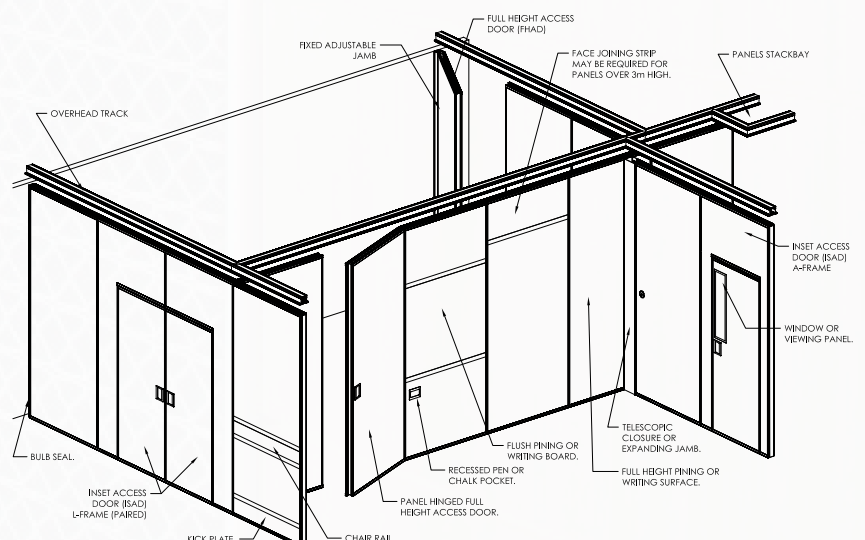
Feature: Inset Access Doors.

Benefit: Easy entry and exit into the room via any panel along the opening.



5000 Series Operable Walls are perfect for:

- Schools & Universities
- Office areas
- Bars, Clubs, Restaurants & Cafés
- Reception venues
- Churches
- Hotels & Ballrooms



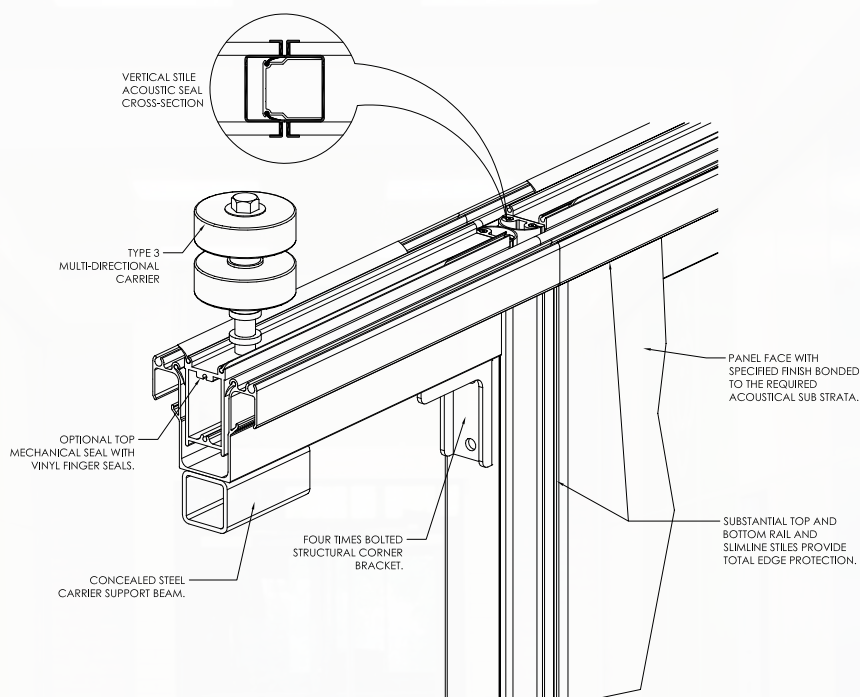
5000 Series: Specification System

The following information details the numbering system and options for our 5000 Series Operable Walling. When you need to create a fit for purpose specification for any of our product ranges we recommend you visit our website at www.hufcor.com.au and use our unique, interactive, online specification writing tool.

5000 Series Numbering System:

The “example only” column shows the digits 5512-45 which specifies a 5000 Series Operable Wall with Centre Tracking, Type 1 Track, Type 2 retractable pressure seals and an acoustic performance of 45 Rw.

This is a typical selection for a centre hung (paired panel) layout.

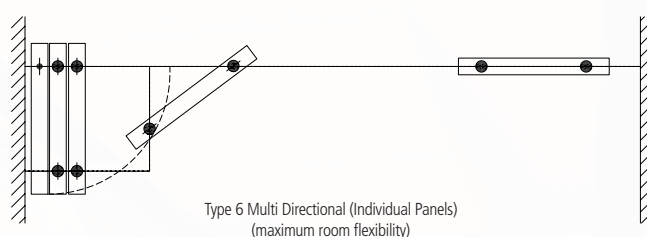
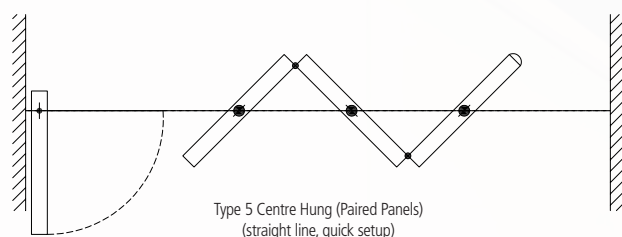


		(EXAMPLE ONLY)	YOUR SELECTION
FIRST NUMBER	Series 5000 is designated with the number 5	5	
SECOND NUMBER	Select the track configuration: Centre tracking type 5 Multi Directional or side tracking type 6	5	
THIRD NUMBER	Select the track and carrier system from the relevant drawing chart: Series 5000 <div> <div>Centre</div> <div>1 or 5</div> </div> <div> <div>Multi Directional</div> <div>1 or 3</div> </div>	1	
FOURTH NUMBER	Select the horizontal seal, ensuring that it is compatible with the Rw levels you require (Please see the Acoustic Ratings and performance on the next page)	2	
FINAL TWO NUMBERS	The final two numbers designate the required acoustic rating Rw (Please see the Acoustic Ratings and performance information on the following page).	45	

YOUR SELECTION

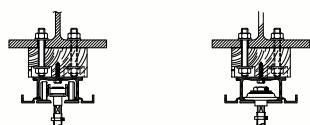
-

Second number: select a stack configuration option



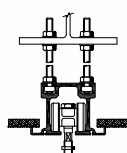
Third number: select a track system option

Type 1
For both Centre Hung &
Multi Directional Layouts

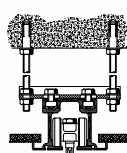


Direct Fixed

Type 5
For Centre Hung Layouts

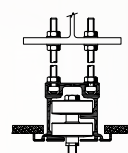


Suspended to
top of track

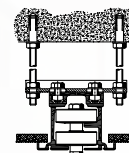


Suspended to
cleat

Type 3
For Multi Directional Layouts

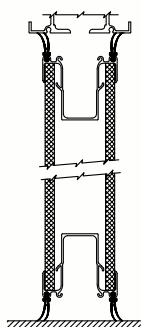


Suspended to
top of track

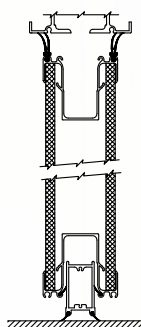


Suspended
to cleat

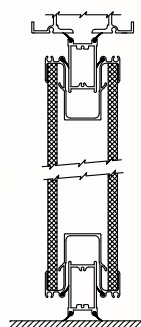
Fourth number: select a horizontal seal option



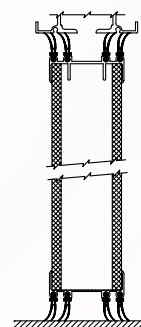
5 __ 0 SEALS



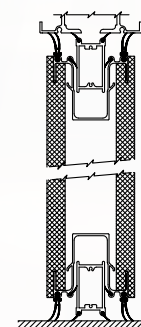
5 __ 1 SEALS



5 __ 2 SEALS



5 __ 3 SEALS



5 __ 4 SEALS

Final two numbers: select acoustic rating option (See chart below to ensure the selected seal type corresponds with the selected Rw rating).

Weighted Sound Reduction Index (dB)		Weight Range Kgs / m ²	Horizontal Seal Type				
(Rw)	(C:Ctr)		0	1	2	3	4
36	(-1;-5)	20 – 35	STANDARD	✓	✓	✗	✗
40	(-2;-6)	22 – 37	STANDARD	✓	✓	✗	✗
44	(-3;-9)	24 – 39	✗	STANDARD	✓	✓	✗
45	(-2;-4)	27 – 42	✗	✗	STANDARD	✓	✗
49	(-2;-8)	32 – 38	✗	✗	✗	✗	STANDARD

Panel weights vary and are subject to applied panel face finishes.
Please contact Hufcor for an accurate assessment of panel weights.

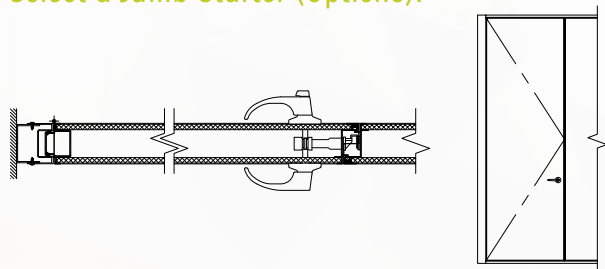
*TEST IN ACCORDANCE WITH ASTM E90-70

✓ Optional ✗ Not Available

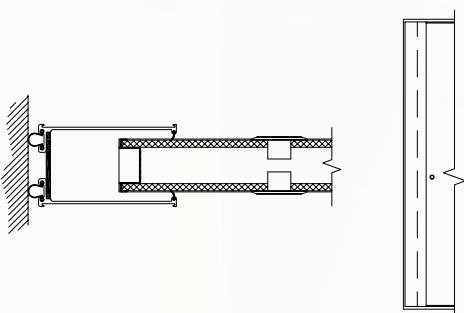
Note: Acoustic testing conducted in accordance with AS1191. Rw determined in accordance with AS/NZS1276.

Closures & Jambs

Select a Jamb Starter (Options):



Hinged Full Height Access Door

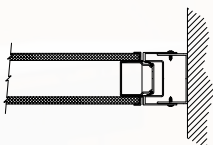


Telescopic/Expanding Panel

Generally used at one end to close the final gap between the Operable Wall and the structural end wall.

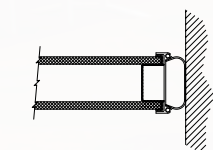
Exerts 110kg of force to ensure a tight wall closure and vertical panel seal.

Select a Terminal Jamb (Options):



Fixed Adjustable Jamb

A permanently attached, 2 piece, extruded aluminium jamb which can compensate for minor wall irregularities.

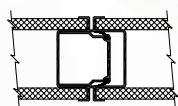


Balloon Bumper Seal

Stores away with terminal panel. Used for flat, uninterrupted wall surfaces.

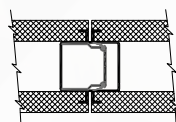
An ovoid, hollow, extruded non-PVC Thermoplastic seal.

Select a Vertical Stile (Options):



Standard Stile

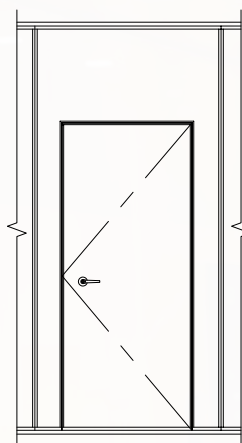
Providing total wrap around edge protection.



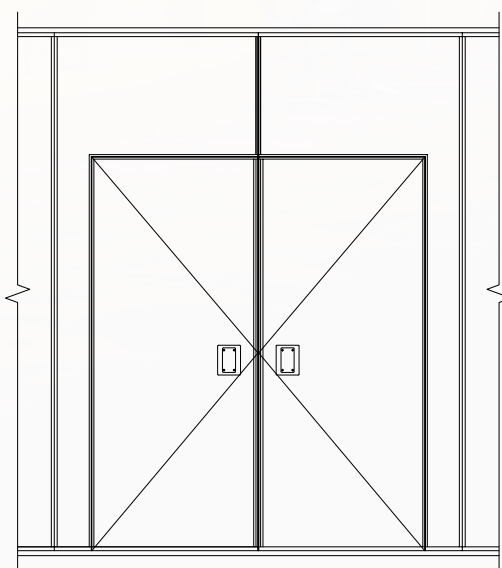
Overlay Stile

Provides uninterrupted finish to the wall.

Inset Access Door (ISAD) (Options):



A Frame Type

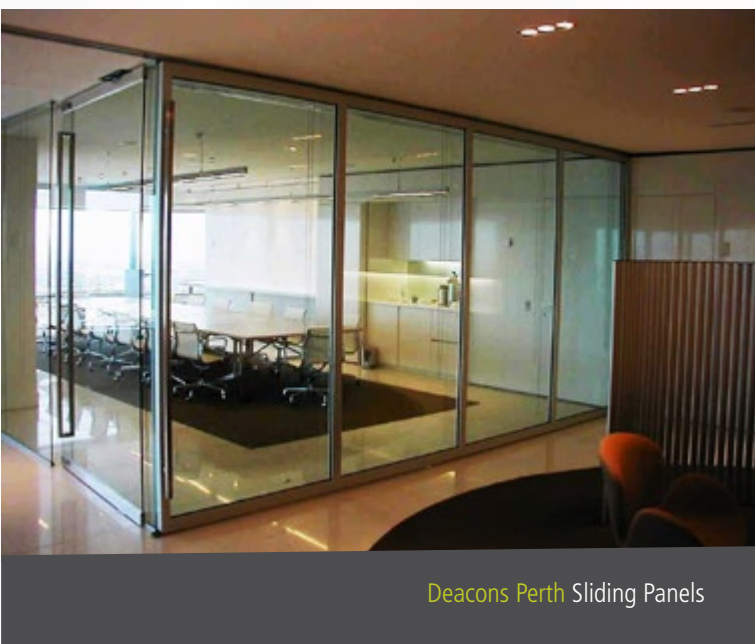


L Frame Type Single or Paired Available

Sliding Walls

The Hufcor Acoustic and Non Acoustic (cavity or surface) slider is a functional and efficient alternative to conventional Operable Wall systems.

You can maximize your space potential with Hufcor's sliding wall series. A sliding wall divides your available space to create meeting rooms, extra offices, classrooms, function areas, even outdoor dining.



Deacons Perth Sliding Panels

A Sliding Wall Is Ideal For:

- Hotels and Ballrooms
- Restaurants and Cafés
- Offices, Schools and Universities
- Facilities with an emphasis on aesthetics

Sliding Wall Systems Series

- Series 3000 40mm thick rails with frameless glass
- Series 5000 75mm thick frames
- Series 8000 100mm thick frames

Cavity Slider: Enables a door to slide inside the wall leaving the floor and wall space on both sides clear and unobstructed.

Surface Mounted Slider: Enables a door to slide on one face of the wall leaving the floor and one surface clear and unobstructed.



Channel 9 Loading Dock Melbourne VIC

Benefits of a Sliding Wall

- Top supported only; manual or electric operation
- No floor tracks
- Self activating retractable mechanical pressure seal option.
- Multilite combination of either, glass (for visual interconnectivity) or non transparent substrates for privacy.

Available in a wide range of colours and finishes, including:

- Fabrics
- Veneers
- Pinboards
- Whiteboards
- Glass



Canadian Lead Primary School Ballarat Sliding Panels

Certificates for Customer Confidence

For many years in Australia, Hufcor - and subsidiary company, Kyissa - has been setting the industry benchmark for operable partitions, glass walls and washroom cubicle systems. As the world's largest manufacturer of operable partitions, Hufcor leads the industry in creative partition designs and outstanding workmanship.

Sustainability

We believe that commercial, environmental and social objectives must work hand in hand to deliver sustainable outcomes. Hufcor is committed to producing Operable Wall systems that deliver customised design, reliability, innovative technology and minimise the impact on the environment.

Hufcor is working to make a positive difference by setting higher standards of environmental performance for its products and operations. Whilst there is a lot to do, Hufcor is already achieving some important outcomes.

- Hufcor Operable Walls and partitions were the first wall systems in Australia to be certified against voluntary environmental performance standards.
- Certified environmentally preferable materials are used where possible to manufacture our products.
- Operable Walls are designed with a loose face construction to reduce the amount of adhesives and enable more efficient disassembly of components for repairs and material recovery.
- The company has established a product stewardship program to recover and re-use or recycle materials at the end of life.
- Recycling programs have been implemented at all manufacturing and distribution sites for raw materials used in production and consumables.
- The company has established environmental management plan to measure and reduce waste, emissions and resources use and increase recycling and efficiencies.

Our Environmental Policy

Hufcor strives to be environmentally aware and actively supports programmes that minimise negative impacts on the environment. We are committed to comply with relevant environmental legislation and requirements to prevent pollution.

We seek to understand the effects our activities have on the environment and to continually improve our environmental performance by supporting initiatives such as:

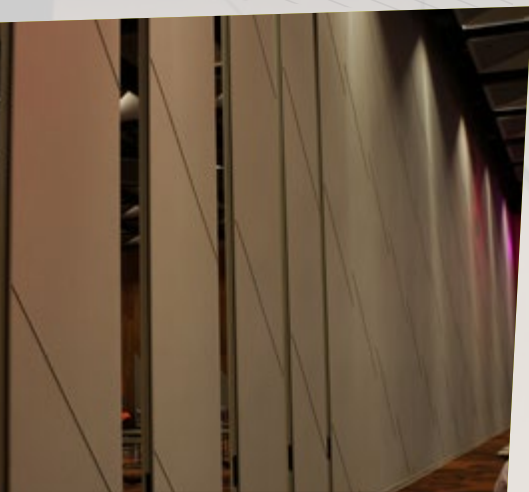
- Waste minimisation
- Reduction of resource consumption
- Recycling
- Procurement of environmentally preferable products
- Design for Environment

Hufcor seeks to ensure that its Environmental plans, objectives and performance are made available to all stakeholders and that environmental benefits can be independently verified.

We will ensure that this policy and all procedures relating to it are understood, implemented and maintained throughout the company.

Our belief is that this policy can only be successfully achieved with the support and commitment of all employees of Hufcor Group.

8000 Series: Product Gallery



Melbourne Exhibition & Convention Centre VIC



Civic Centre Wyndham VIC



St Patrick's College Launceston TAS



Perforated Panel Detail
Walter & Eliza Hall Institute
Melbourne VIC



Mt. Waverley Christian School VIC



Walter & Eliza Hall Institute Melbourne VIC

8000 Series Overview

The 8000 Series panels are the choice for premier acoustical properties and aesthetics. A panel width of up to 1200mm is standard. Other widths are possible depending on finishes and acoustic ratings. Panels are engineered to perform at heights up to 8 metres and beyond.

Features and benefits of the 8000 Series operable partitions

Feature: High Acoustic Performance.

Benefit: The 100mm thick construction allows for superior acoustic performance able to achieve a sound reduction of 53Rw.

Feature: Non Standard Opening Heights.

Benefit: Ensures maximum space utilization within areas such as concert halls, exhibition buildings, hotels & convention centres due to the robust structural panel frame.

Feature: Full Perimeter Aluminium Frames.

Benefit: Offers 3 distinctive aluminium frame options within the range which include:
Standard Frame: provides total wrap around edge protection and provides a hand hold when moving the panels.
Finestile Frame: Provides edge protection with minimal trim visibility.
Overlay Frame: Provides a total uninterrupted finish along the entire length of the wall.

Feature: Deep set vertical tongue and groove seals.

Benefit: Create a sophisticated acoustic labyrinth ensuring optimum acoustic separation is achieved which also helps align the panels during setup.

Feature: Top & Bottom Retractable Seals.

Benefit: Provides ease of use by eliminating friction between the seals and finished floor. Deep set type retractable seals are also an option which accommodate greater tolerances in floor levels. (Deep set seals are offered with Horizontal seal types 6 and 7).



Centennial Park NSW

Operable Partition Decorative Features

- Standard vinyl finishes
- Custom face finishes
 - Fabric
 - Veneer
 - Wood moulding
 - High pressure laminates, etc.
- Chair rails
- Inset work surfaces
- Pinboards
- Whiteboards & Pen Pockets
- Standard Stile
- Finestile Stile
- Overlay Stile
- Access Doors
- Access Doors

Series 8000 Operable Walls are perfect for:

- Businesses and offices
- Reception centres
- Schools & Universities
- Hotels
- Concert Halls, Ballrooms
- Bars & Clubs



Truffle Duck VIC



Walter & Eliza Hall Institute Melbourne VIC

8000 Series: Specification System

The following information details the numbering system and options for our 8000 Series Operable Walling. When you need to create a fit for purpose specification for any of our product ranges we recommend you visit our website at www.hufcor.com.au and use our unique, interactive, online specification writing tool.

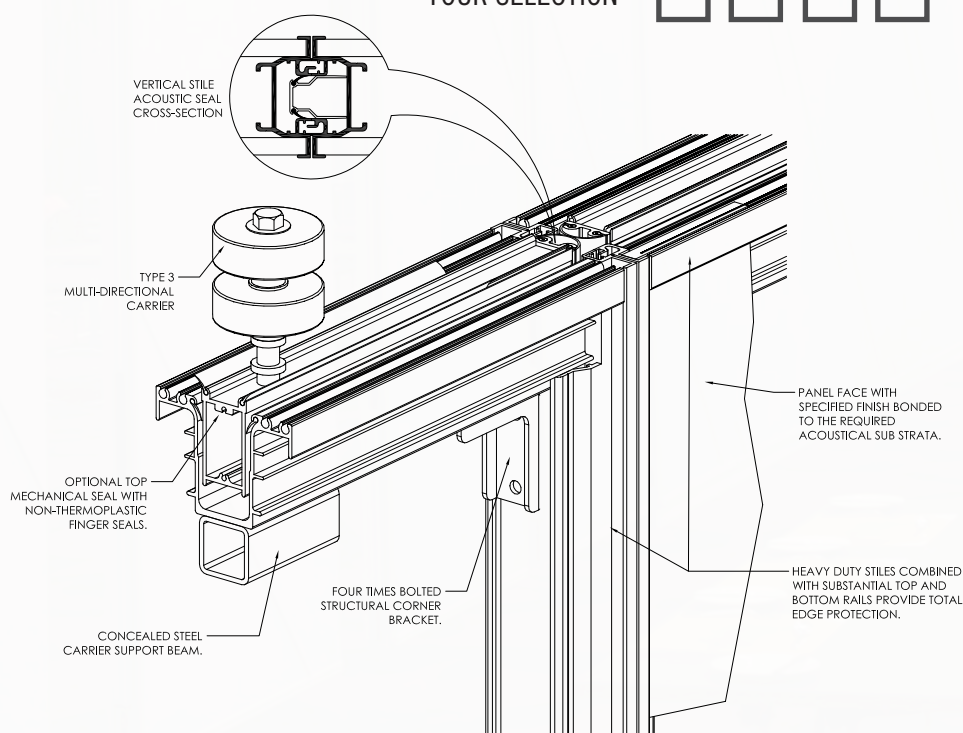
8000 Series Numbering System:

The "example only" column shows the digits 8638-51 which specifies a Series 8000 Operable Wall System that is Multi Directional, Type 3 Track, Type 8 retractable pressure seals and acoustic performance of 51 Rw.

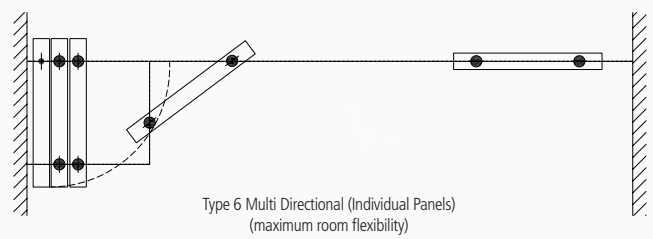
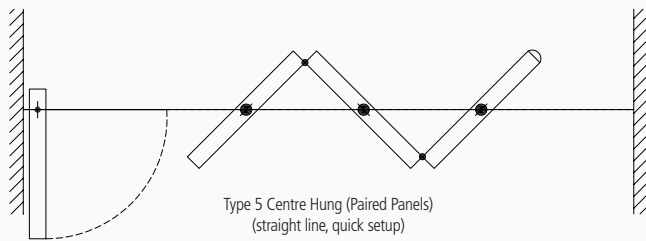
This is a typical selection for multi directional tracking in conference rooms and convention centres.

		(EXAMPLE ONLY)	YOUR SELECTION
FIRST NUMBER	Series 8000 is designated with the number 8	8	
SECOND NUMBER	Select the track configuration: Centre tracking type 5 Multi Directional or side tracking type 6	6	
THIRD NUMBER	Select the track and carrier system from the relevant drawing chart: Series 8000 Centre 5 Multi Directional 3	3	
FOURTH NUMBER	Select the horizontal seal, ensuring that it is compatible with the Rw levels you require (Please see the Acoustic Ratings and performance on the next page)	8	
FINAL TWO NUMBERS	The final two numbers designate the required acoustic rating (Rw) (Please see the Acoustic Ratings and performance information above).	51	

YOUR SELECTION

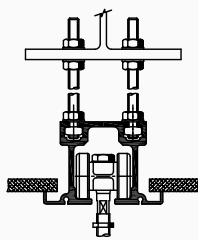
 -


Second number: select a stack configuration option

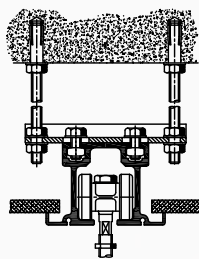


Third number: select a track system option

TYPE 5 - For centre hung layouts

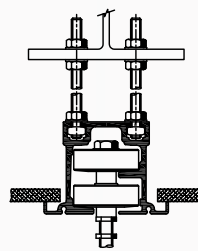


Suspended to top of track

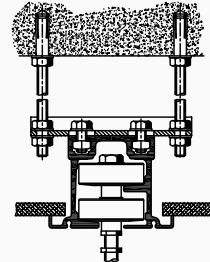


Suspended to cleat

TYPE 3 - For multi directional layouts

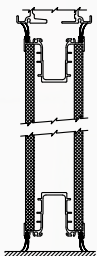


Suspended to top of track

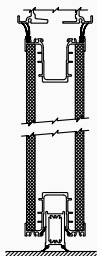


Suspended to cleat

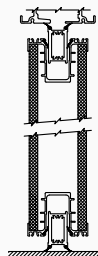
Fourth number: select a horizontal seal option



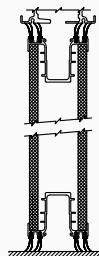
8__0 SEALS



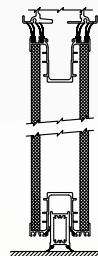
8__1 SEALS



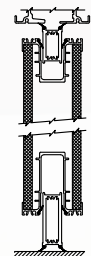
8__2 SEALS



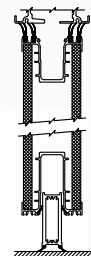
8__3 SEALS



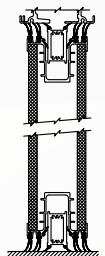
8__5 SEALS



8__6 SEALS



8__7 SEALS



8__8 SEALS

Final two numbers: select acoustic rating option (See chart below to ensure the selected seal type corresponds with the selected Rw rating.)

Weighted Sound Reduction Index (dB)		Approximate Weight Kgs / m ²	Horizontal Seal Type							
(Rw)	(C:Ctr)		0	1	2	3	5	6	7	8
45	(-2;-4)	34 – 49	✗	✗	STD	✓	✗	✓	✓	✗
48	(-2;-7)	36 – 60	✓	✗	✓	✓	STD	✓	✓	✗
49	(-1;-5)	41 – 65	✗	✗	STD	✗	✗	✓	✓	✗
51	(-2;-6)	42 – 66	✗	✗	✗	✗	✗	✗	✗	STD
*53	(EST)	45 – 69	✗	✗	✗	✗	✗	✗	✗	STD

Panel weights vary and are subject to applied panel face finishes.

Please contact Hufcor for an accurate assessment of panel weights.

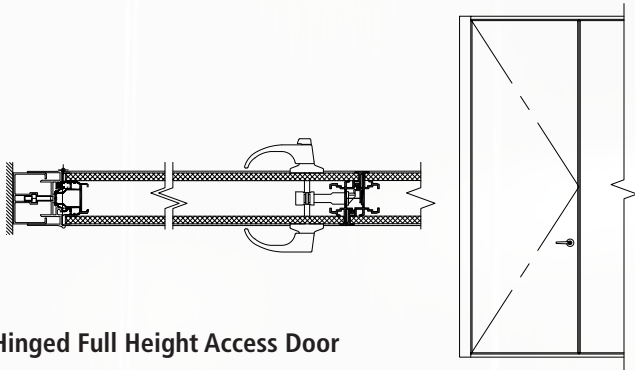
*TEST IN ACCORDANCE WITH ASTM E90-70

✓ Optional ✗ Not Available

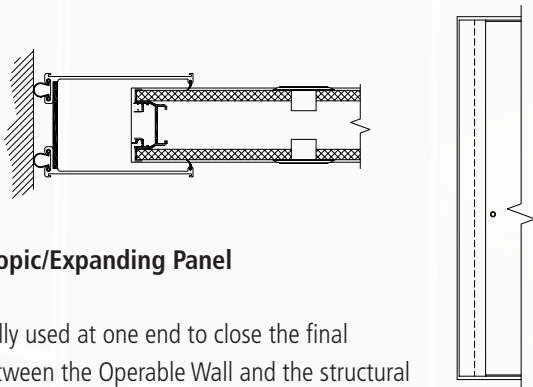
Note: Acoustic testing conducted in accordance with AS1191. (Rw) determined in accordance with AS/NZS 1276.

Closures & Jambs

Select a Jamb Starter (Options):



Hinged Full Height Access Door



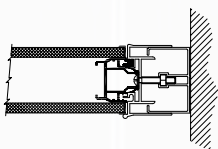
Telescopic/Expanding Panel

Generally used at one end to close the final gap between the Operable Wall and the structural end wall.

Exerts 110kg of force to ensure a tight wall closure and vertical panel seal.

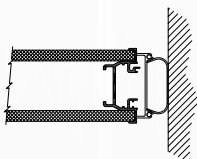
Select a Terminal Jamb (Options):

Fixed Adjustable Jamb



A permanently attached, 2 piece, extruded aluminium jamb which can compensate for minor wall irregularities.

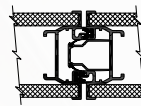
Balloon Bumper Seal



Stores away with terminal panel. Used for flat, uninterrupted wall surfaces.

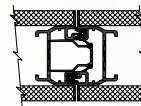
An ovoid, hollow, extruded non-PVC Thermoplastic seal

Select a Vertical Stile (Options):



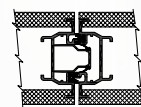
Standard Stile

Providing total wrap around edge protection.



Finestile

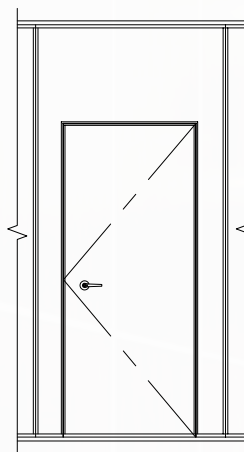
Edge protection with minimal trim visible.



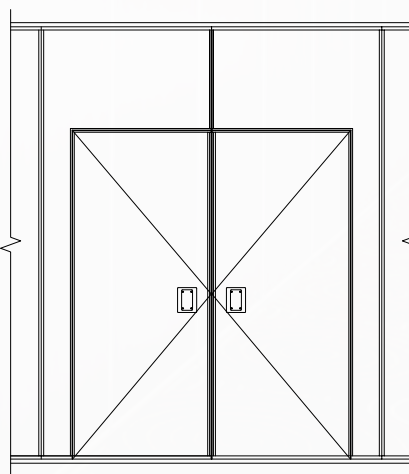
Overlay Stile

Provides uninterrupted finish to the wall.

Inset Access Door (ISAD) (Options):



A Frame Type



L Frame Type Single or Paired Available



AUSTRALIA WIDE: 1300 HUF COR (1300 483 267) www.hufcor.com.au

AUSTRALIAN HEAD OFFICE

7-9 Distribution Drive, Truganina
VIC 3029
Ph: (03) 8366 1900
Fax: (03) 8366 1999

**VIC:
HUF COR**

7-9 Distribution Drive,
Truganina VIC 3029
Ph: (03) 9338 7400
Fax: (03) 9338 9166
Email:
vicsales@hufcor.com

**NSW/ACT:
HUF COR**

14 Homedale Road,
Bankstown NSW 2190
Ph: (02) 9707 0700
Fax: (02) 9707 0799
Email:
nswsales@hufcor.com

**QLD:
HUF COR**

Unit 5, 140 Wecker Road,
Mansfield QLD 4122
Ph: (07) 3420 2900
Fax: (07) 3420 2999
Email:
qldsals@hufcor.com

**SA:
HUF COR**

3 Star Avenue,
Dudley Park 5008
Ph: (08) 8340 8147
Fax: (08) 8340 1688
Email:
sasales@hufcor.com

**WA/NT:
HUF COR**

Unit 2, 160-162
Bannister Road,
Canningvale WA 6155
Ph: (08) 9455 2822
Fax: (08) 9455 1699
Email:
wasales@hufcor.com

**NZ:
HUF COR**

457 Jackson Street,
Pentone NZ 5012
Ph: 0011 (64) 4586 7162
Fax: 0011 (64) 4586 7140
Email:
stinworth@hufcor.com